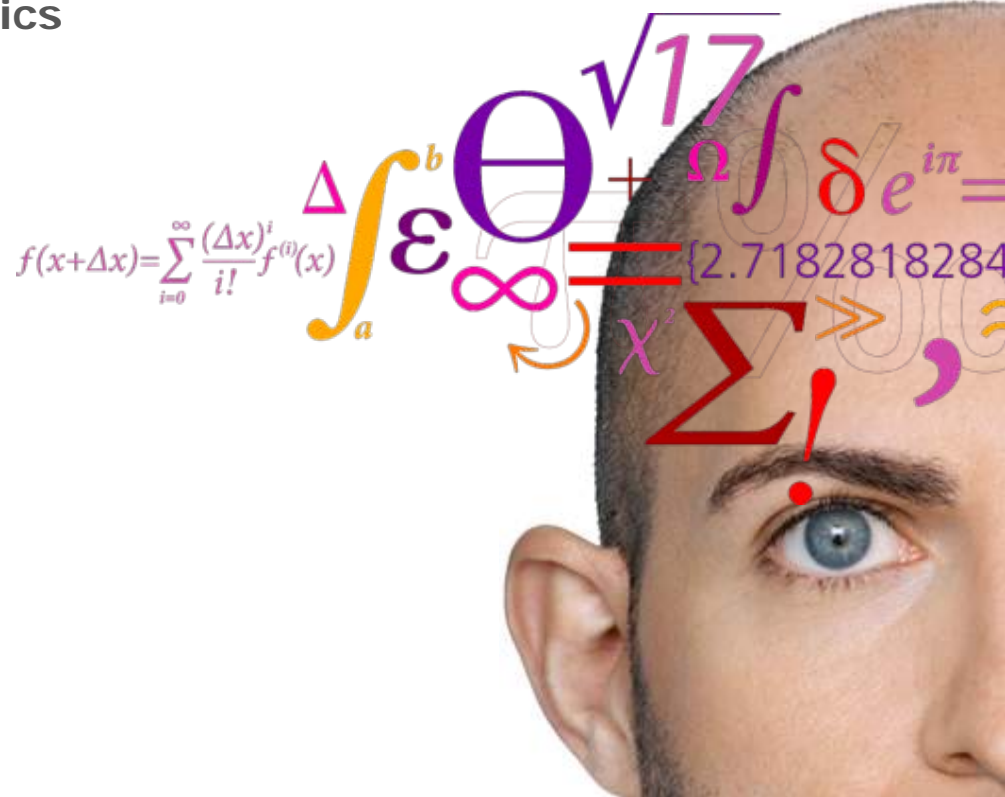


Technical University of Denmark

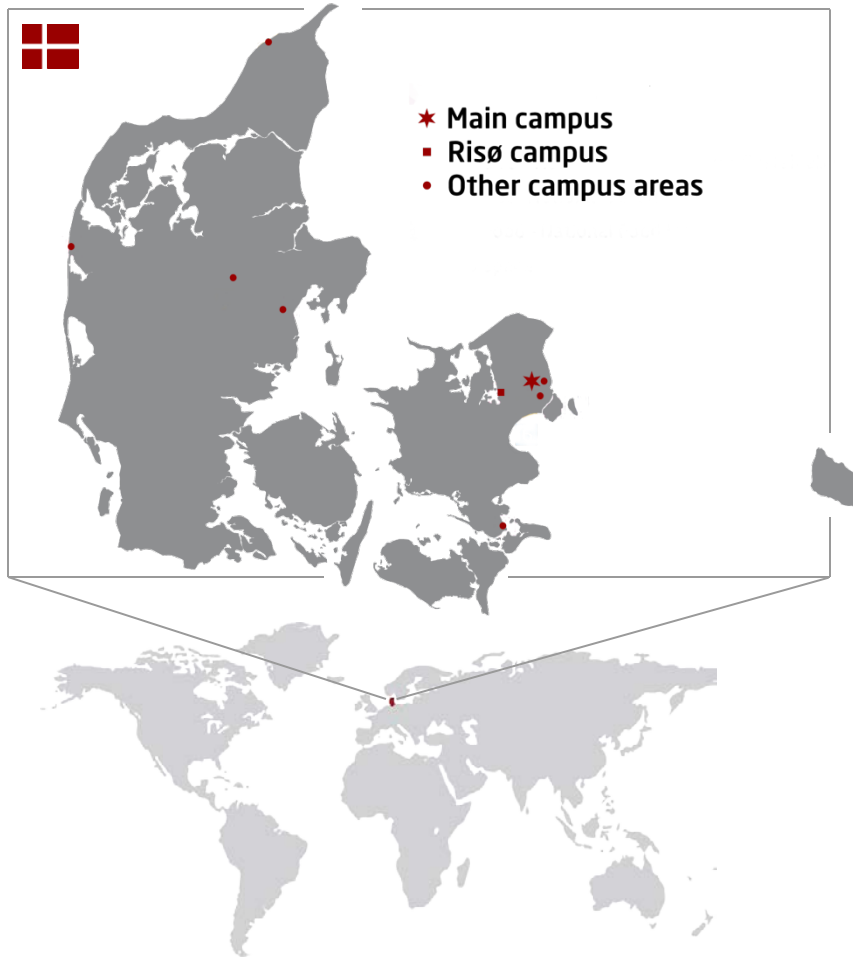
Jan Madsen, Professor
 Head of Embedded Systems Engineering
 Deputy Director of DTU Informatics

Danish delegate in ARTEMIS GB



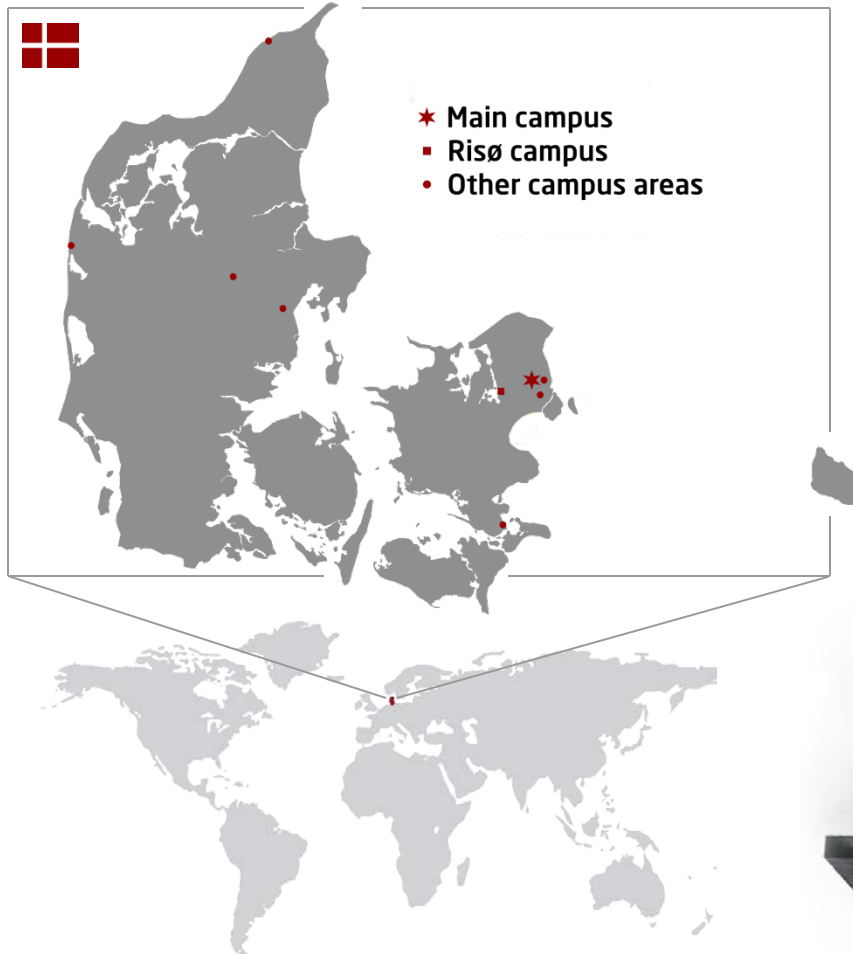
Technical University of Denmark

(founded 1829; first rector H.C. Ørsted)



Technical University of Denmark

(founded 1829; first rector H.C. Ørsted)



Key figures

Total students	~8.500
including Ph.D. and Int. M.Sc.	1.200 650
Research publications	3.600

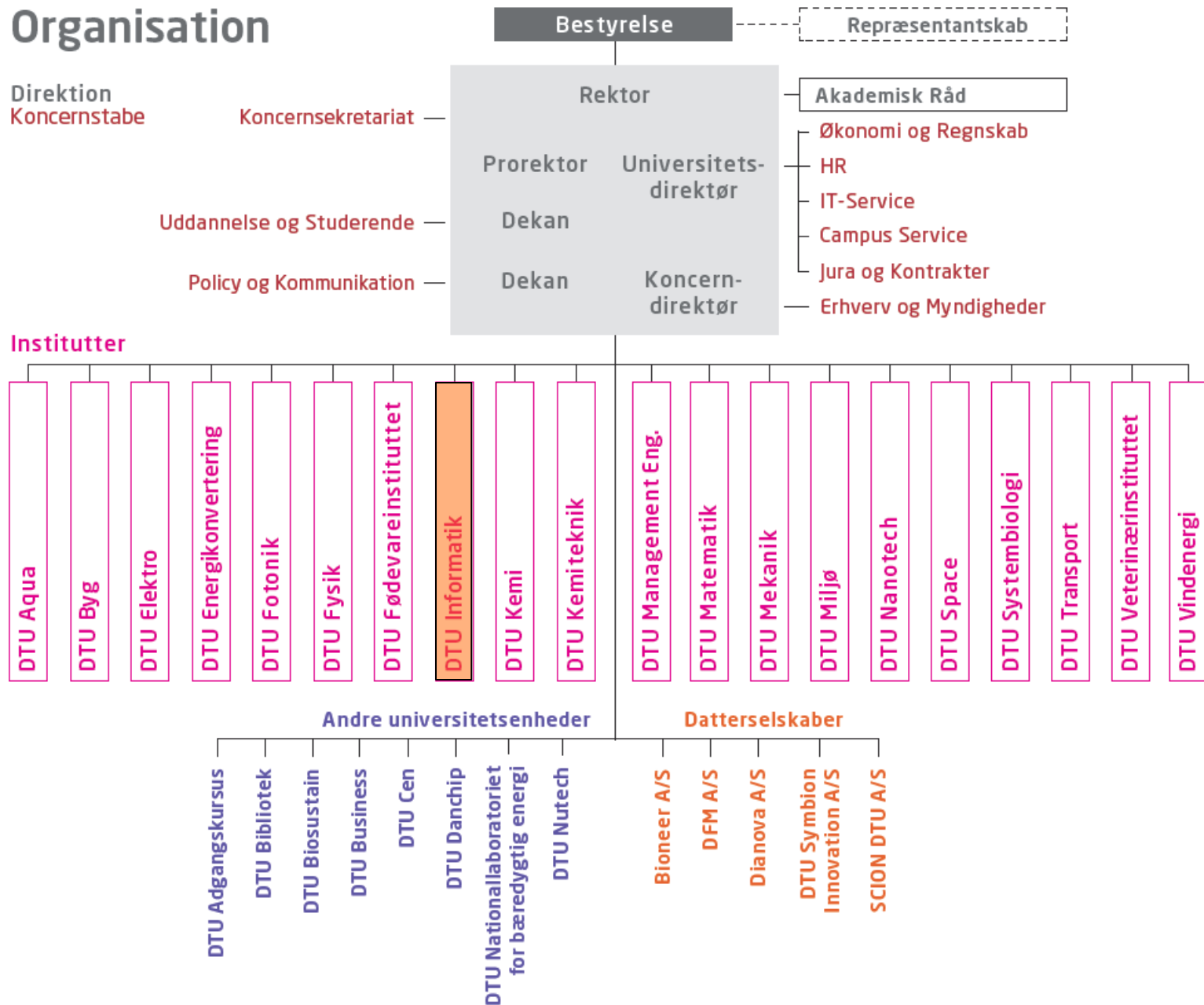


Ranking

Leiden *Crown Indicator* 2010:
no. 1 in Scandinavia
no. 7 in Europe



Organisation

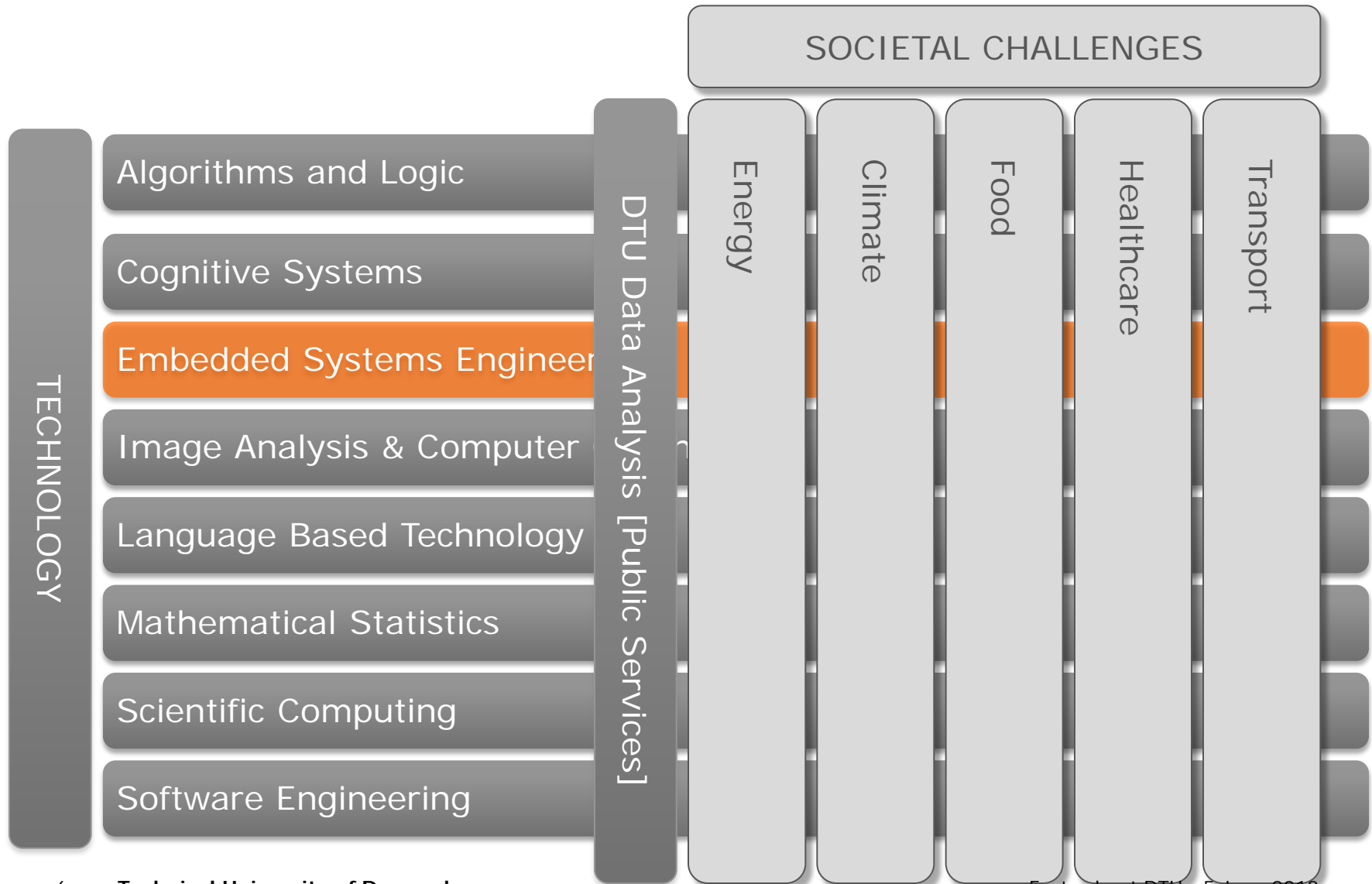


DTU Informatics

65 faculty | 40 scientific | 84 PhDs | 48 administrative

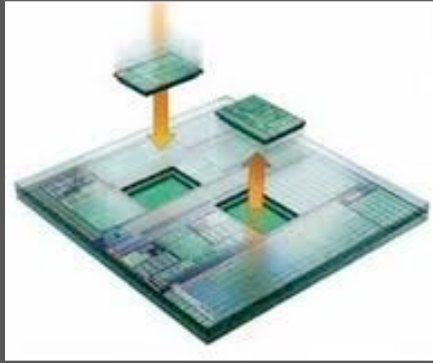


DTU Informatics



Embedded Systems Engineering

Predictable MPSoC



Cyber-Physical Systems



BioChips



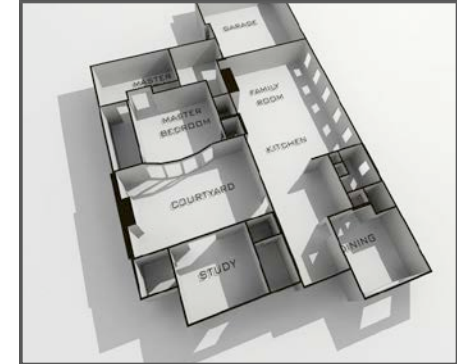
Model-Based Development

$$\begin{aligned} & \Box (([provided(s_{11}, 1)] \wedge i > 2 \wedge L \\ & \quad = \tau_0; L \geq T_0 - \tau_0) \Rightarrow \\ & \quad (\tau_0 \leq L < T_0 - \tau_{shared}; [available(r_{shared})] \\ & \quad \wedge L \geq \tau_{shared}; true)), \\ & \Box (([provided(s_{21}, 1)] \wedge j > 2 \wedge L = \tau_1; L \geq T_1 - \tau_1) \Rightarrow \\ & \quad (\tau_1 \leq L < T_1 - \tau_{shared}; [available(r_{shared})] \\ & \quad \wedge L \geq \tau_{shared}; true)) \text{ and } \\ & \neg \Diamond ([requested(critical, 1) \wedge requested(critical, 2)]; true). \end{aligned}$$

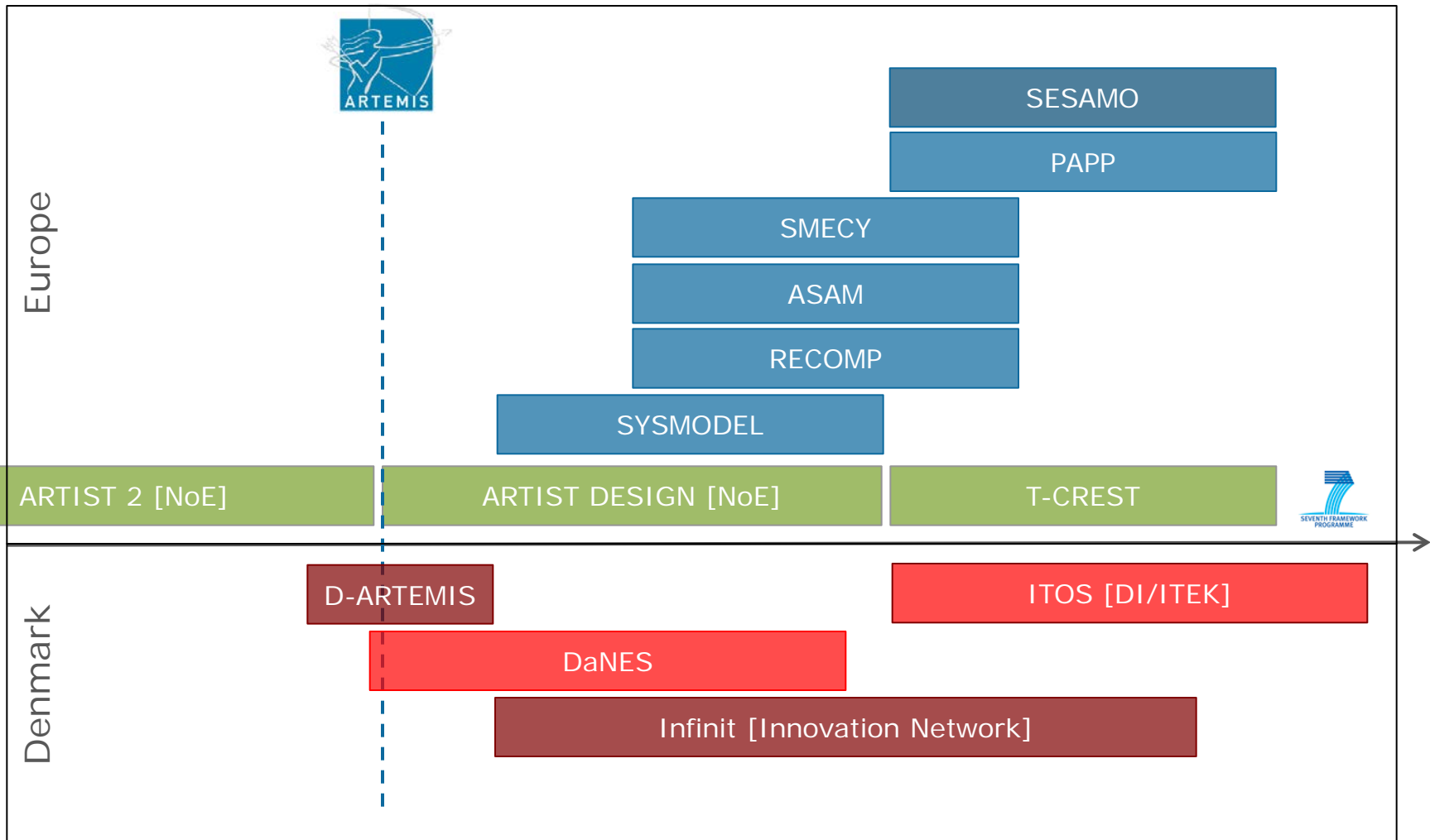
Safety-Critical Systems



IT Security



DTU Informatics & ARTEMIS



Questions?

Thanks to Karin Tunder for the local organization

